

VERDE TRAIL SOUTH AND ST. ANDREWS BOULEVARD OF VIA VERDE - P.U.D.

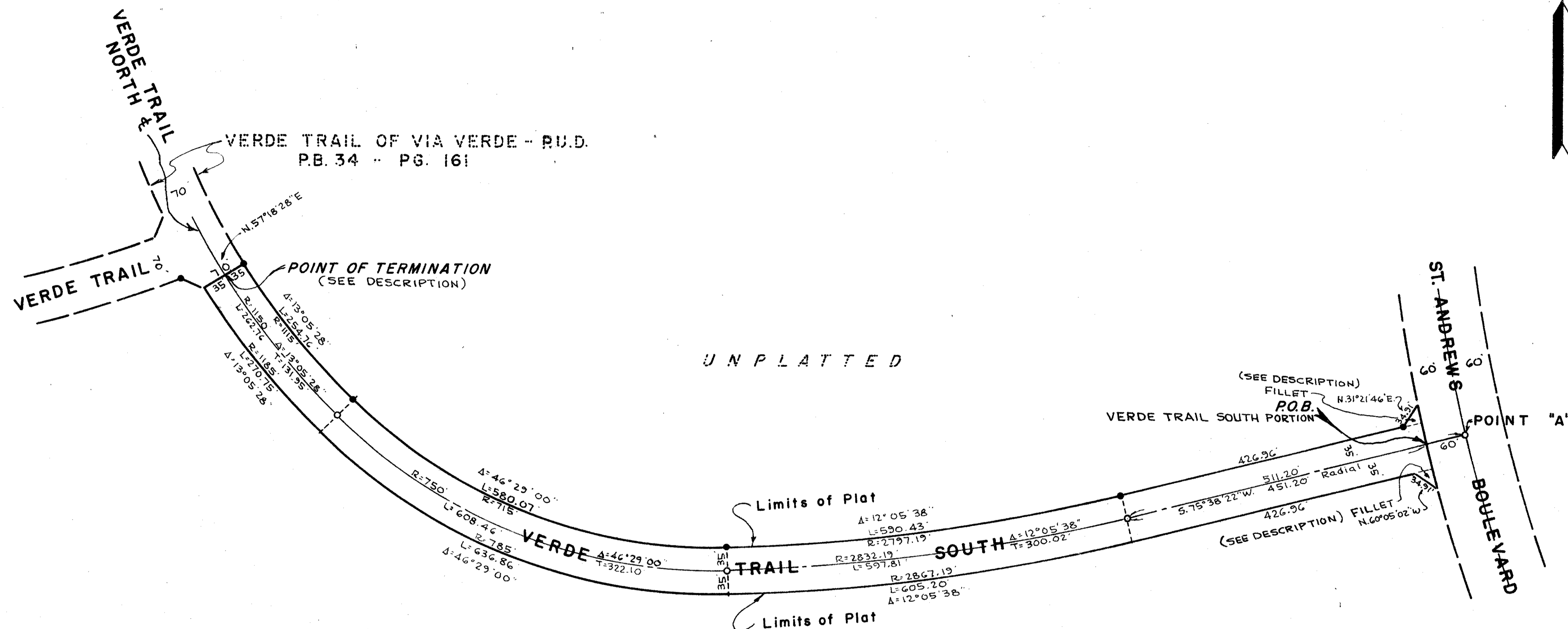
IN PART OF SECTIONS 22 & 23, TWP. 47 S., RGE. 42 E.

PALM BEACH COUNTY, FLORIDA
IN 3 SHEETS SHEET NO. 3

GEE & JENSON
ENGINEERS-ARCHITECTS-PLANNERS, INC.
WEST PALM BEACH, FLORIDA
JUNE 1978

192

STATE OF FLORIDA
COUNTY OF PALM BEACH
This Plat was filed for record at
this day of 197
and duly recorded in Plat Book No.
on page
JOHN B. DUNKLE, Clerk Circuit Court
By



39

NOTES

- denotes Permanent Reference Monument
 - denotes Permanent Control Point
- All Bearings shown hereon are based on an assumed meridian used throughout Via Verde.

22+23/47/42

VIA VERDE

35/192